

AE7 EV Fuse



FEATURES:

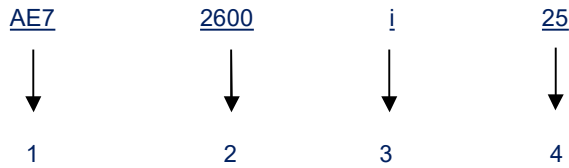
- 800 VDC EV high-speed power fuse
- Rated Current: 60-600 A
- Rated Breaking Capacity: 50 kA at 700 VDC, 50kA at 750VDC, 20 kA at 800 VDC
- Time Constant: $(L/R)^2 \pm 0.5$ ms
- Dimensions: 25x66 mm, 38x72 mm, 51x72 mm
- Special purpose fuse for EV/HEV automotive use
- Ideal for high power EV PDU and battery protection
- Ref. to IEC 60269-4, ISO 8820
- Recommended fuse holder: BFR094-35-M8, BFR106-35-M8, BFR108-43-M10

ELECTRICAL SPECIFICATIONS

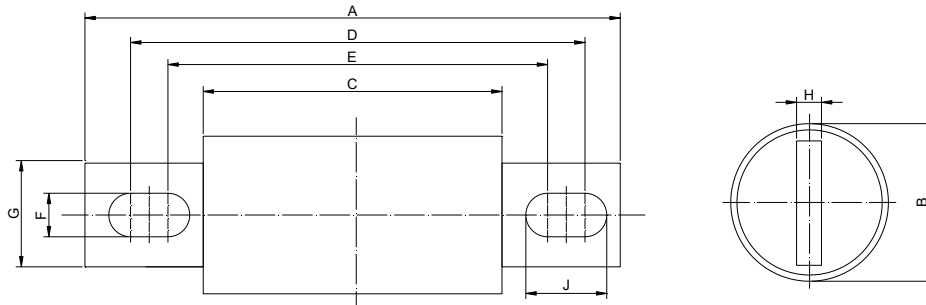
Part Number	Rated Current	Ampere Code	Rated Voltage	Melting I ² t	Clearing I ² t	Breaking Capacity	0.5I _n Dissipation (W)
AE72600i25	60 A	2600	800 VDC	5880	15373	50kA@700VDC 50kA@750VDC 20kA@800VDC	3.00
AE72700i25	70 A	2700		6860	17935		3.50
AE72800i25	80 A	2800		8960	23425		4.00
AE73100i25	100 A	3100		14000	36601		5.00
AE73125i25	125 A	3125		23000	60131		5.50
AE73150i25	150 A	3150		31000	81046		6.00
AE73175i38	175 A	3175	800 VDC	40000	104575	50kA@700VDC 50kA@750VDC 20kA@800VDC	6.56
AE73200i38	200 A	3200		52000	135948		7.50
AE73250i38	250 A	3250		57937	138468		9.38
AE73300i38	300 A	3300		69524	181762		11.25
AE73350i38	350 A	3350		81111	212055		13.13
AE73400i38	400 A	3400		92698	242349		15.00
AE73450i51	450 A	3450	800 VDC	104285	272643	50kA@700VDC 50kA@750VDC 20kA@800VDC	15.00
AE73500i51	500 A	3500		115873	302936		16.67
AE73560i51	560 A	3560		129777	339289		18.67
AE73600i51	600 A	3600		139047	363524		20.00

Note:

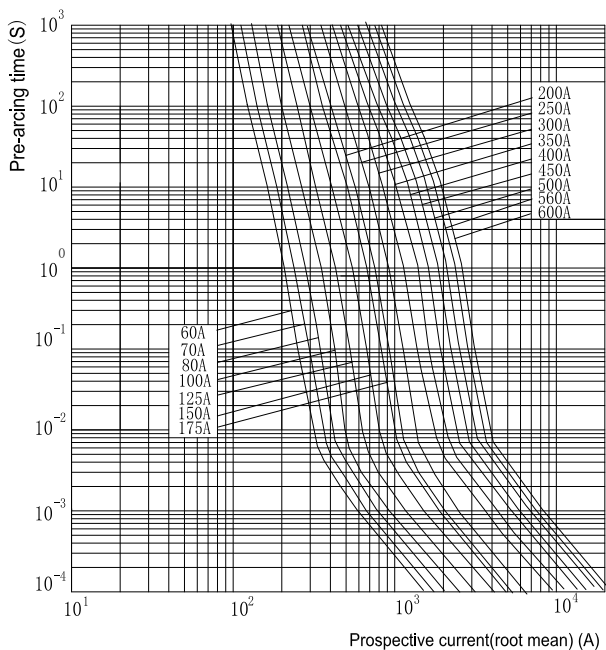
(1) Temperature Rise: ≤ 50 K at 50 % of rated current at 20°C environment temperature.

PART NUMBER SYSTEM


- 1Product Series AE7
- 2 Ampere Code 60 A (see ampere code column of electrical specifications)
- 3 Mounting i - bolt
- 4 Supplementary Code 25, 38, 51: default

DIMENSIONS (mm)


P/N	A	B	C	D	E	F	G	H	J
AE7xxxxi25	111±0.8	25±0.5	66±0.8	95±0.8	93±0.8	9.0±0.5	18±0.5	3±0.1	10.0±0.5
AE7xxxxi38	129±0.8	38±0.5	72±0.8	107±0.8	89±0.8	10.5±0.5	25±0.5	6±0.1	19.5±0.5
AE7xxxxi51	129±0.8	51±0.5	72±0.8	109±0.8	90±0.8	10.5±0.5	38±0.5	6±0.1	20.0±0.5

Time Current Curve (reference)

Current Limiting (reference)
